



• Diagnostic Visual D&C and Endometrial Biopsy • RPOC Evacuation
• Lysis of Septum • Myomectomy • Polypectomy • Hysteroscopic Adhesiolysis

A clear advantage in
uterine tissue removal



 **smith&nephew**
TRUCLEAR[◇]
System



Setting the standard in hysteroscopic tissue removal

Bring clarity, precision and efficiency to hysteroscopic tissue removal with the TRUCLEAR® System. Featuring fast, efficient resection, advanced fluid management and pathology-optimized tissue removal devices, the TRUCLEAR System offers a complete technology platform for the removal of a range of intrauterine abnormalities.

With over eight years of clinical experience, the TRUCLEAR System continues to set the standard for effective and safe tissue removal.



TRUCLEAR Hysteroscope Set
(TRUCLEAR 8.0 System shown here)

“The development of the TRUCLEAR System represents a major breakthrough in hysteroscopic surgery.”

Prof. Justin Clark,
Birmingham Women's
Hospital, Birmingham,
United Kingdom

Designed for optimum performance

Clear Operative Field

- 100% continuous flow and suction helps maintain a clear operative field
- No tissue floating within the uterine cavity

Safe Gentle Resection

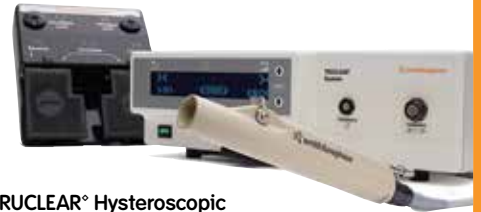
- Simple, mechanical design means there is no risk of energy discharge-induced scarring and a reduced risk of air or gas emboli compared to conventional resection
- Localized treatment reduces endometrial damage, which may help preserve the chances of pregnancy
- Proprietary suction control technology minimizes fluid use

Efficient Procedure

- Continuous cutting and tissue removal means only a single insertion is necessary
- Single insertion means fewer procedural steps

Effective Pathology Removal

- Targeted pathology removal under continuous visualization ensures efficient cut and capture
- Tissue capture allows evaluation of the entire pathology



**TRUCLEAR® Hysteroscopic
Tissue Removal System**



**Hysteroscopic
Fluid Management
System**

“With the flexibility of the TRUCLEAR system I can address a wide spectrum of abnormalities with one-high performing system.”

Dr. Charles E. Miller,
Advocate Lutheran
General Hospital,
Park Ridge, IL

Multiple procedures, one high-performance system

As the only pathology-optimized, hysteroscopic tissue removal system, the TRUCLEAR[®] System enables more efficient procedures and enhanced performance for a full spectrum of conditions, including:

Diagnostic Visual D&C and Endometrial Biopsy

Provides direct visualization of the uterine cavity, facilitating removal of targeted endometrial tissue, hyperplastic endometrium or other intrauterine tissue for pathology analysis

Myomectomy

Brings speed, efficiency and precision to the removal of myomas

Helps ensure patient safety through advanced fluid management

Retained Products of Conception Evacuation

Designed to minimize endometrial damage and reduces risk of intrauterine adhesions by evacuating RPOC under direct visualization

Captures tissue for histological confirmation

May reduce the need for additional procedures as the system has demonstrated complete removal in over 94% of patients²

Lysis of Intrauterine Septum

Enables the removal of the septum rather than transection

Hysteroscopic Adhesiolysis

Removes intrauterine adhesions under direct visualization

Designed to reduce damage to surrounding healthy endometrium

Polypectomy

May improve the efficiency of polyp removal by reducing polypectomy procedure time by half¹

More likely to completely remove polyps compared to electrical resection³

Minimizes patient discomfort

1. Emanuel, M.H., and Wamsteker, K. (2005). "The Intra Uterine Morcellator: A New Hysteroscopic Operating Technique to Remove Intrauterine Polyps and Myomas." *The Journal of Minimally Invasive Gynecology* 12(1), 62-66.
2. Hamerlynck, TWO, MD; Blikkendaal, MD, MD; Schoot, BC, MD, PhD; Hanstede, MMF, MD and Jansen, FW, MD, PhD. (2013). "An Alternative Approach for Removal of Placental Remnants: Hysteroscopic Morcellation." *JMIG* December 2013 20(6), 796-802.
3. Smith, PP, MBChB; Middleton, LJ, MSc; Connor, M, MD and Clark, TJ, MD (2014). Hysteroscopic Morcellation Compared With Electrical Resection of Endometrial Polyps. (2014). *Obstetrics & Gynecology*, 123(4), 745-751.

More options mean more control in every procedure

The TRUCLEAR® System blends high-performance tissue removal devices and scopes with advanced fluid management for efficient and effective pathology removal. The system includes:

The TRUCLEAR 5C Hysteroscope Set:

- Enables both operative and diagnostic procedures, eliminating the need for scope changes
- Patient-friendly instrumentation, with an anatomically-designed distal end for gentle introduction into the cervical canal and uterine cavity, with little to no dilation needed
- Longer scope means access to the entire uterus, including cornua and fundal wall
- Used with the TRUCLEAR INCISOR® Device



TRUCLEAR 5C Hysteroscope Set

The TRUCLEAR 8.0 Hysteroscope Set:

- Large working channel offers capability to use additional hysteroscopy instruments
- Option to use TRUCLEAR Obturator for gentle introduction of the sheath into the uterine cavity
- For use with the TRUCLEAR INCISOR Plus and the TRUCLEAR ULTRA Plus Devices

TRUCLEAR Tissue Removal Devices:

- Simultaneous tissue cutting and aspiration to reduce procedure time
- Proprietary suction control feature to minimize fluid loss
- Three pathology-optimized disposable devices:
 - 1) TRUCLEAR INCISOR Device for soft tissue
 - 2) TRUCLEAR INCISOR Plus Device for soft tissue
 - 3) TRUCLEAR ULTRA Plus Device for dense tissue

See and Treat Methodology

Offering a clear view of the uterine cavity and a large working channel, TRUCLEAR Hysteroscopes allow you to treat uterine conditions at the same time as diagnosis.

“The operative port allows for the introduction of rigid scissors for septal resection; TRUCLEAR devices for removal of polyps, fibroids, or to perform curettage; and tubal catheterization for the evaluation and treatment of proximal tubal occlusion in conjunction with the use of the C arm.”

Dr. Daniel B. Williams,
Houston Fertility Institute,
Houston, TX



TRUCLEAR INCISOR Device



TRUCLEAR INCISOR Plus Device



TRUCLEAR ULTRA Plus Device

“Because operative hysteroscopy requires precise inflow and outflow measurement to ensure patient safety, accuracy and precision are key in fluid management; and that’s what I’ve found in Smith & Nephew’s Fluid Management System.”

Dr. Robert Gustofson,
Colorado Center for
Reproductive Medicine,
Denver, CO

TRUCLEAR[◇] Hysteroscopic Fluid Management System enhances visualization and helps ensure patient safety

Maintaining proper fluid levels is essential for successful outcomes. The TRUCLEAR Fluid Management System features:

High flow rate

- Maximum flow rate of 700 ml/min optimizes visualization
- Allows intrauterine pressure to be maintained at the desired level

High-speed response

- Proprietary software allows agile response to intrauterine changes
- Scale continuously monitors fluid deficit for accurate measurements

Controlled suction

- Provides suction flexibility in order to maintain clear visualization

Reliable warning systems for safety

- Audible alarms indicating over pressure, under pressure and fluid deficit thresholds





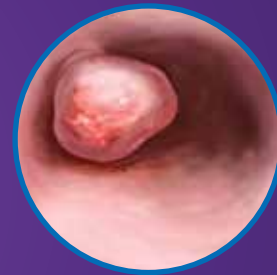
Insert the hysteroscope into the uterus



Distend the uterus with saline

Performing hysteroscopic tissue removal: *a simple procedure*

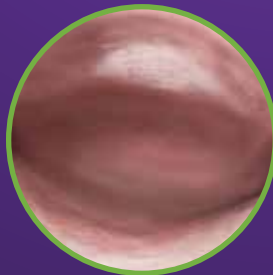
The procedure uses a tissue removal device inserted through a hysteroscope that simultaneously cuts and aspirates tissue.



Locate intrauterine abnormality



Place device against pathology – TRUCLEAR® Device will simultaneously aspirate and cut tissue



Remove the device and hysteroscope from uterus

Get a clear advantage in your procedures

To learn more about the TRUCLEAR[®] System, contact your local sales representative.

Ordering information

Part #	Product Description	Unit of Measure
72202709	TRUCLEAR Hysteroscopic Tissue Removal System	Inclusive of:
7209808	TRUCLEAR Control Unit	Each
7209820	TRUCLEAR Footswitch	Each
7209807	TRUCLEAR Handpiece	Each
72202707	TRUCLEAR 8.0 Hysteroscope Set	Inclusive of:
7209208	TRUCLEAR Operative Hysteroscope 8.0	Each
7209383	TRUCLEAR Sheath 9.0	Each
7209384	TRUCLEAR Obturator	Each
72203606	TRUCLEAR Calibration Insert 4.0	Each
72202720	Hysteroscopic Fluid Management System	Inclusive of:
7210164	Hysteroscopic Fluid Management System Control Unit	Each
7210165	Hysteroscopic Fluid Monitor System Stand	Each
7210166	Hysteroscopic Roller Base	Each
72203420	Hysteroscopic Vacuum Regulator	Each
7210164	Country Kit (Manual and Power Cord)	Each
72202734	TRUCLEAR System	Includes all the above
72204837	TRUCLEAR 5C Hysteroscope Set	Inclusive of:
72204752	TRUCLEAR Operative Hysteroscope 5C	Each
72204753	TRUCLEAR Sheath 5C	Each
72203506	TRUCLEAR Calibration Insert 2.9	Each

Part #	Product Description	Unit of Measure
Disposable Products		
Tissue Removal Devices		
72203012	TRUCLEAR ULTRA Plus Device	Each
7209509	TRUCLEAR INCISOR [®] Plus Device	Each
72202536	TRUCLEAR INCISOR Device	Each
Tube Sets		
7209827	Hysteroscopic Procedure Kit (Includes Inflow Tube Set, Outflow Tube Set, IUR Non-sterile Kit)	Inclusive
7209824	IUR Non-sterile Kit (Includes 4 jumper tubes and tissue trap)	Each
72203257	Single Jumper Procedure Kit	Each
7209822	Hysteroscopic Inflow Tube Set	Box of 10
72200869	Y-Adaptor, Inflow Tube Set	Box of 10
7209823	Hysteroscopic Outflow Tube Set	Box of 5
72200024	3000cc Hi-Flow Canisters	Box of 36
Other		
72203304	Vacuum Pump (EU)	Each
72203305	Vacuum Pump (UK)	Each

Smith & Nephew, Inc.
150 Minuteman Road
Andover, MA 01810 USA

www.sntruclear.com
T +1 978 749 1000
International Customer Service: +1 978 749 1140

[®]Trademark of Smith & Nephew. Certain marks Reg. US Pat. & TM Office. All other trademarks acknowledged. ©2015 Smith & Nephew, Inc. All rights reserved. Printed in USA. 01778 V3 09/15

FOR DISTRIBUTION OUTSIDE OF THE UNITED STATES ONLY.